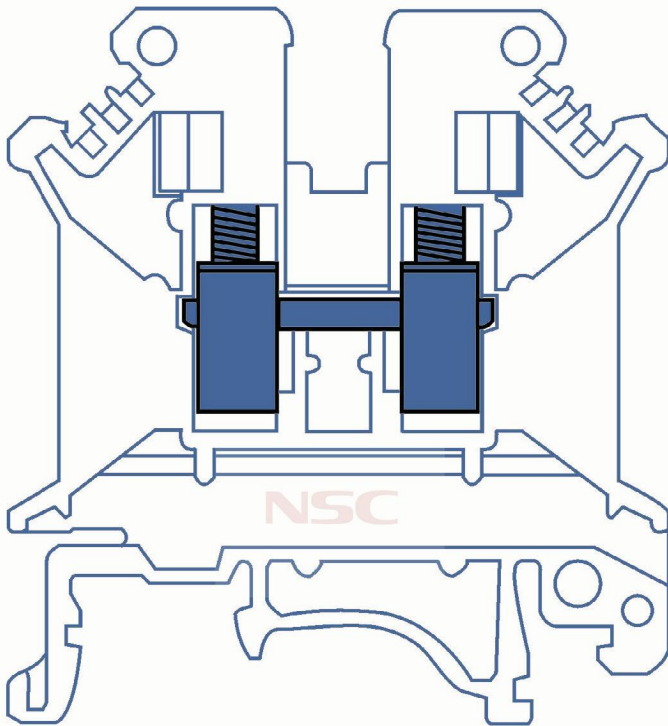


NSC

Price List

(1400.04.01)



BLOXconnect[®]
BETTER CONNECTING TOGETHER



◀ FJ80A
 1000V Current: 80A
 In: 16mm²x1(3.5Nm)
 Out: 6mm²x4(1.2Nm)
 Out: 16mm²x2(3.5N.m)
557.100 Rls



◀ FJ125A
 1000V Current: 125A
 In: 35mm²x1(8.5Nm)
 Out: 16mm²x6(3.5Nm)
 Out: 16mm²x1(3.5N.m)
1.137.000 Rls



◀ FJ160A
 1000V Current: 160A
 In: 70mm²x1(8.5Nm)
 Out: 16mm²x6(3.5Nm)
 Out: 16mm²x1(3.5N.m)
1.159.000 Rls



◀ FJ250A
 1000V Current: 250A
 In: 120mm²x1(19Nm)
 Out: 35mm²x2(4.4Nm)
 Out: 16mm²x5(2.7N.m)
 Out: 10mm²x4(2.7N.m)
3.291.000 Rls



◀ FJ400A
 1000V Current: 400A
 In: 185mm²x1(25Nm)
 Out: 35mm²x2(4.4Nm)
 Out: 16mm²x5(2.7N.m)
 Out: 10mm²x4(2.7N.m)
3.501.000 Rls



◀ FJ500A
 1000V Current: 500A
 In: 8x24x1mm
 Out: 35mm²x2(4.4Nm)
 Out: 16mm²x5(2.7N.m)
 Out: 10mm²x4(2.7N.m)
3.733.000 Rls



◀ FJ175A
 690V Current: 175A
 In: 70mm²x1(5Nm)
 Out: 16mm²x10(3N.m)
2.295.000 Rls



◀ FJ175A-3P
 690V Current: 175A
 In: 70mm²x1X3(5Nm)
 Out: 16mm²x6X3(3Nm)
3.709.000 Rls



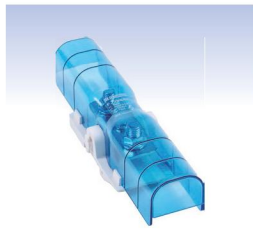
◀ FJ125A-3P
 690V Current: 125A
 In: 35mm²x4(8.5Nm)
 Out: 16mm²x12(2.7Nm)
 Out: 6mm²x19(1.2N.m)
2.896.000 Rls



◀ FJ125A-1P
 1000V Current: 125A
 In: 35mm²x1(8.5Nm)
 Out: 35mm²x1(8.5Nm)
720.000 Rls



◀ FJ250A-1P
 1000V Current: 250A
 In: 120mm²x1(19Nm)
 Out: 120mm²x1(19Nm)
2.688.000 Rls



◀ FJ250AL
 690V Current: 250A
 In: 120mm²x1(19Nm)
 Out: 120mm²x1(19Nm)
2.225.000 Rls



◀ FJ-217/40B
 500V Current: 40A
 In: 16mm²x2(2~3Nm)
 Out: 4mm²x15(1.2~1.5Nm)
1.507.000 Rls



◀ FJ-208/80B
 500V Current: 80A
 In: 6mm²x3(2Nm)
 Out: 4mm²x5(1.2Nm)
605.000 Rls



◀ FJ-218/80B
 500V Current: 80A
 In: 6mm²x6(2Nm)
 Out: 4mm²x12(1.2Nm)
1.047.000 Rls



◀ FJ-207/100B
 500V Current: 100A
 In: 25mm²x1(2~3Nm)
 Out: 4mm²x3(1.2~1.5Nm)
 Out: 6mm²x3(2~3N.m)
696.000 Rls



◀ FJ-211/100B
 500V Current: 100A
 In: 25mm²x2(2~3Nm)
 Out: 4mm²x4(1.2~1.5Nm)
 Out: 6mm²x5(2~3N.m)
1.021.000 Rls



◀ FJ-215/100B
 500V Current: 100A
 In: 25mm²x2(2~3Nm)
 Out: 4mm²x6(1.2~1.5Nm)
 Out: 6mm²x7(2~3N.m)
1.345.000 Rls



◀ FJ-207/125BE
 500V Current: 125A
 In: 35mm²x1(2~3Nm)
 Out: 25mm²x1(2~3Nm)
 Out: 6mm²x5(2~3N.m)
696.000 Rls



◀ FJ-211/125BE
 500V Current: 125A
 In: 35mm²x2(2~3Nm)
 Out: 25mm²x2(2~3Nm)
 Out: 6mm²x7(2~3N.m)
1.021.000 Rls



◀ FJ-215/125BE

500V Current: 125A
In: 35mm²x2(2~3Nm)
Out: 25mm²x2(2~3Nm)
Out: 6mm²x11(2~3N.m)

1.345.000 Rls



◀ FJ-207/125B

690V Current: 125A
In: 35mm²x1(6~7Nm)
Out: 6mm²x5(2~3Nm)
Out: 25mm²x1(2~3N.m)

1.184.000 Rls



◀ FJ-215/125B

690V Current: 125A
In: 35mm²x1(6~7Nm)
Out: 6mm²x11(2~3Nm)
Out: 25mm²x3(2~3N.m)

1.877.000 Rls



◀ FJ-413/40B

500V Current: 40A
In: 16mm²x2(2~3Nm)
Out: 4mm²x11(1.2~1.5Nm)

2.574.000 Rls



◀ FJ-408/80B

500V Current: 80A
In: 6mm²x3(2Nm)
Out: 4mm²x5(1.2Nm)

1.066.000 Rls



◀ FJ-413/80B

500V Current: 80A
In: 6mm²x5(2Nm)
Out: 4mm²x8(1.2Nm)

1.601.000 Rls



◀ FJ-418/80B

500V Current: 80A
In: 6mm²x6(2Nm)
Out: 4mm²x12(1.2Nm)

2.018.000 Rls



◀ FJ-407/100B

500V Current: 100A
In: 25mm²x1(2~3Nm)
Out: 4mm²x3(1.2~1.5Nm)
Out: 6mm²x3(2~3N.m)

1.345.000 Rls



◀ FJ-411/100B

500V Current: 100A
In: 25mm²x2(2~3Nm)
Out: 4mm²x4(1.2~1.5Nm)
Out: 6mm²x5(2~3N.m)

2.086.000 Rls



◀ FJ-415/100B

500V Current: 100A
In: 25mm²x2(2~3Nm)
Out: 4mm²x6(1.2~1.5Nm)
Out: 6mm²x7(2~3N.m)

2.642.000 Rls



◀ FJ-407/125BE

500V Current: 125A
In: 35mm²x1(2~3Nm)
Out: 25mm²x1(2~3Nm)
Out: 6mm²x5(2~3N.m)

1.345.000 Rls



◀ FJ-411/125BE

500V Current: 125A
In: 35mm²x2(2~3Nm)
Out: 25mm²x2(2~3Nm)
Out: 6mm²x7(2~3N.m)

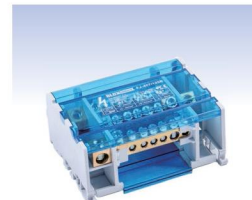
2.086.000 Rls



◀ FJ-415/125BE

500V Current: 125A
In: 35mm²x2(2~3Nm)
Out: 25mm²x2(2~3Nm)
Out: 6mm²x11(2~3N.m)

2.642.000 Rls



◀ FJ-407/125B

690V Current: 125A
In: 35mm²x1(6~7Nm)
Out: 6mm²x5(2~3Nm)
Out: 25mm²x1(2~3N.m)

2.596.000 Rls



◀ FJ-411/125B

690V Current: 125A
In: 35mm²x1(6~7Nm)
Out: 6mm²x7(2~3Nm)
Out: 25mm²x3(2~3N.m)

3.407.000 Rls



◀ FJ-415/125B

690V Current: 125A
In: 35mm²x1(6~7Nm)
Out: 6mm²x11(2~3Nm)
Out: 25mm²x3(2~3N.m)
Out: 35mm²x2(2~3N.m)

4.241.000 Rls



◀ FJ-412/160B

690V Current: 160A
In: 50mm²x1(8~10Nm)
Out: 35mm²x3(2~3Nm)
Out: 16mm²x7(2~3N.m)
Out: 6mm²x1(2~3N.m)

5.842.000 Rls



◀ FJ-412/160BH

690V Current: 160A
In: 50mm²x1(8~10Nm)
Out: 35mm²x3(2~3Nm)
Out: 16mm²x8(2~3N.m)

5.842.000 Rls



◀ NB125A&NB160A

1.253.000 Rls
1.297.000 Rls



◀ FJS-A

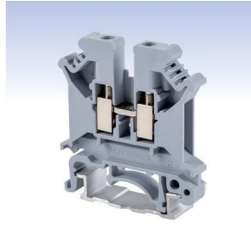
395.000 Rls



FJ3N

800V
Current: 32A
Flexible Wire: 0.2~2.5mm²
Rigid Wire: 0.2~4 mm²
Colour: ■ ■ ■ ■ ■

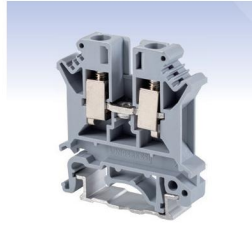
31.250 Rls



FJ5N

800V
Current: 41A
Flexible Wire: 0.2~4mm²
Rigid Wire: 0.2~6mm²
Colour: ■ ■ ■ ■ ■

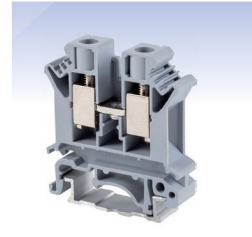
45.000 Rls



FJ6N

800V
Current: 57A
Flexible Wire: 0.2~6mm²
Rigid Wire: 0.2~10mm²
Colour: ■ ■ ■ ■ ■

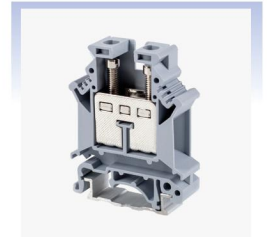
58.750 Rls



FJ10N

800V
Current: 76A
Flexible Wire: 0.5~10mm²
Rigid Wire: 0.5~16mm²
Colour: ■ ■ ■ ■ ■

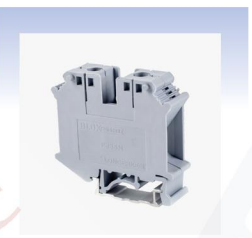
71.750 Rls



FJ16N

800V
Current: 101A
Flexible Wire: 4~16mm²
Rigid Wire: 2.5~25mm²
Colour: ■ ■ ■ ■ ■

140.000 Rls



FJ35NL

800V
Current: 125A
Flexible Wire: 0.75~35mm²
Rigid Wire: 0.75~35 mm²
Colour: ■ ■ ■ ■ ■

284.000 Rls



FJ35NH

800V
Current: 125A
Flexible Wire: 0.75~35mm²
Rigid Wire: 0.75~35 mm²
Colour: ■ ■ ■ ■ ■

290.000 Rls



FJ50

1000V
Current: 150A
Flexible Wire: 25~50mm²
Rigid Wire: 16~50mm²

500.000 Rls



FJ70

1000V
Current: 192A
Flexible Wire: 25~70mm²
Rigid Wire: 16~95mm²

650.000 Rls



FJ95

1000V
Current: 232A
Flexible Wire: 35~95mm²
Rigid Wire: 25~95mm²

1.262.500 Rls



FJ150

1000V
Current: 309A
Flexible Wire: 50~150mm²
Rigid Wire: 35~150mm²

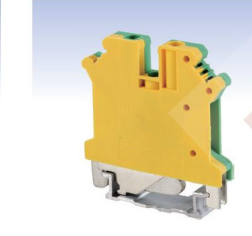
2.425.000 Rls



FJ3N/D

Flexible Wire: 0.2~2.5mm²
Rigid Wire: 0.2~4 mm²
Torque: 0.6~0.8.N.m

137.500 Rls



FJ5N/D

Flexible Wire: 0.2~4mm²
Rigid Wire: 0.2~6mm²
Torque: 0.6~0.8.N.m

173.750 Rls



FJ6N/D

Flexible Wire: 0.2~6mm²
Rigid Wire: 0.2~10mm²
Torque: 1.5~1.8.N.m

197.500 Rls



FJ10N/D

Flexible Wire: 0.5~10mm²
Rigid Wire: 0.5~16mm²
Torque: 1.5~1.8.N.m

223.750 Rls



FJ16N/D

Flexible Wire: 4~16mm²
Rigid Wire: 2.5~25mm²
Torque: 1.5~1.8.N.m

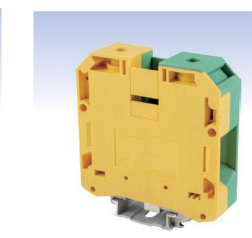
298.750 Rls



FJ35NL/D

Flexible Wire: 0.75~35mm²
Rigid Wire: 0.75~35 mm²
Torque: 3.2~3.7.N.m

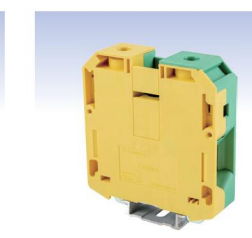
477.500 Rls



FJ50/D

Flexible Wire: 25~50mm²
Rigid Wire: 16~50mm²
Torque: 6~8.N.m

1.660.000 Rls



FJ70/D

Flexible Wire: 25~70mm²
Rigid Wire: 16~95mm²
Torque: 8~10.N.m

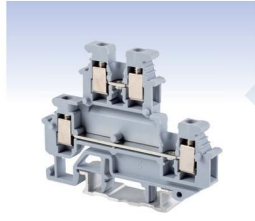
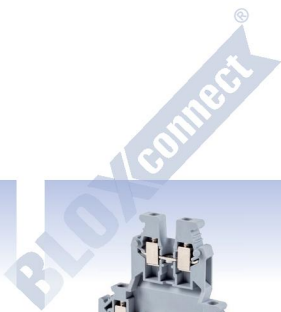
3.110.000 Rls



FJ95/D

Flexible Wire: 35~95mm²
Rigid Wire: 25~95mm²
Torque: 15~20.N.m

3.910.000 Rls



FJKKB2.5

500V
Current: 24A
Flexible Wire: 0.2~2.5mm²
Rigid Wire: 0.2~4mm²
Torque: 0.5~0.6N.m

93.000 Rls

FJKK3

500V
Current: 32A
Flexible Wire: 0.2~2.5mm²
Rigid Wire: 0.2~4mm²
Torque: 0.5~0.6N.m

120.000 Rls

FJKK5

500V
Current: 32A
Flexible Wire: 0.2~4mm²
Rigid Wire: 0.2~4mm²
Torque: 0.6~0.8N.m

122.000 Rls



FJ-4HESI

500V
Current: 6.3A
Flexible Wire: 0.5~4mm²
Rigid Wire: 0.5~6mm²
Torque: 0.5~0.6N.m

262.500 Rls

FJ-5HESI

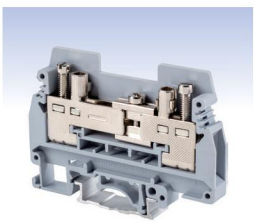
800V
Current: 6.3A
Flexible Wire: 0.2~4mm²
Rigid Wire: 0.2~4mm²
Torque: 0.5~0.8N.m
24VDC / 220VAC

305.000 Rls

FJ-10DREHSI

500V
Current: 6.3A
Flexible Wire: 0.5~16mm²
Rigid Wire: 0.5~16mm²
Torque: 1.5~1.8N.m

473.000 Rls



FJTK/S

400V
Current: 57A
Flexible Wire: 0.5~6mm²
Rigid Wire: 0.5~10 mm²
Torque: 1.2~1.5N.m

287.500 Rls

FJ-5MTK

800V
Current: 16A
Flexible Wire: 0.2~4mm²
Rigid Wire: 0.2~4mm²
Torque: 0.5~0.6N.m

292.500 Rls





D-FJ4/10
For: FJ3N ~ FJ10N

درپوش ترمینال 2.5 تا 10

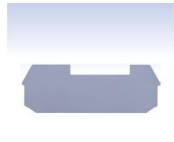
16,000 Rls



D-FJ16
For: FJ16N

درپوش ترمینال 16

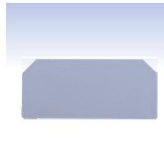
16,000 Rls



DP-FJKKB2.5
For: FJKKB2.5

پارتیشن ترمینال دو طبقه

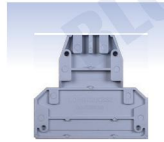
18,000 Rls



DP-FJJKK3/5
For: FJJKK3, FJJK5

پارتیشن ترمینال دو طبقه

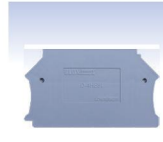
18,000 Rls



DG-FJJKK3/5
For: FJJKK3, FJJK5

پارتیشن ترمینال دو طبقه

25,000 Rls



D-4HESI
For: FJ-4HESI

درپوش ترمینال فیوز خور

25,000 Rls



TS-KK3
Small Partition

پارتیشن

9,800 Rls



TS-K
Small Partition

پارتیشن ترمینال های ریلی

9,800 Rls



ATP-FJ
For: FJ3N ~ FJ16N

درپوش

25,000 Rls



D-FJKKB2.5
For: FJKKB2.5

درپوش ترمینال دو طبقه

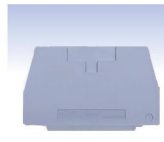
25,000 Rls



D-FJJKK3/5
For: FJJKK3, FJJK5

درپوش ترمینال دو طبقه

25,000 Rls



D-FJTK
For: FJTK/S

درپوش ترمینال جریان

25,000 Rls



KLM-A
Strip Marker

لیبل ترمینال

33,700 Rls



FJBE/D
Marking Termianl Blocks

لیبل ترمینال

38,750 Rls



FJBE/A
Marking Termianl Blocks

لیبل ترمینال

35,000 Rls



ZB5
For: FJ3N, FJKKB2.5, FJJKK3

شماره ترمینال 2.5

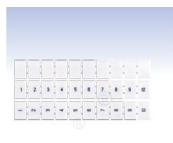
28,500 Rls



ZB6
For: FJ5N, FJJKK5, FJ-5MTK

شماره ترمینال 4

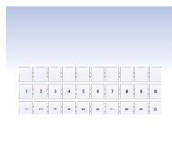
28,500 Rls



ZB8
For: FJ6N, FJ-5HESI, FJ-10DREHSI, FJTK/S

شماره ترمینال 6

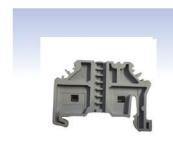
28,500 Rls



ZB10
For: FJ10N~FJ240,

شماره ترمینال 10 تا 240

28,500 Rls



E/117
End Stop

بست انتهایی

31,000 Rls



E/FJ
End Stop

بست انتهایی

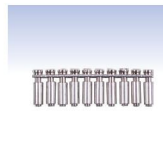
26,000 Rls



E/FJ1
End Stop

بست انتهایی

32,000 Rls



FBI10-5N
For: FJ3N

چمپر ترمینال 2.5

312,500 Rls



FBI10-6
For: FJ5N, FJJKK5

چمپر ترمینال 4

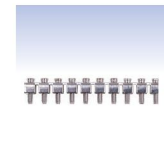
329,000 Rls



FBI10-8
For: FJ6N

چمپر ترمینال 6

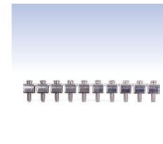
350,000 Rls



FBI10-10
For: FJ10N

چمپر ترمینال 10

370,000 Rls



FBI10-12
For: FJ16N, FJ16NE, FJ-10DREHSI

چمپر ترمینال 16

744,000 Rls



FBI10-15
For: FJ35N, FJ35NE

چمپر ترمینال 35

1.000.000 Rls



FJ-402

600V
Current: 32A
Flexible Wire: 0.08~2.5mm²
Rigid Wire: 0.08~4mm²
Strip Length: 9~10mm
20.5x12.4x14.5mm

35,000 Rls



FJ-403

600V
Current: 32A
Flexible Wire: 0.08~2.5mm²
Rigid Wire: 0.08~4mm²
Strip Length: 9~10mm
20.5x17x14.5mm

43,000 Rls



FJ-405

600V
Current: 32A
Flexible Wire: 0.08~2.5mm²
Rigid Wire: 0.08~4mm²
Strip Length: 9~10mm
20.5x26.6x14.5mm

65,000 Rls



AB/400

For:
FJ-402~FJ-405,
FJ-402P~FJ-405P

92,000 Rls



AB/401

For:
FJ-402~FJ-405,
FJ-402P~FJ-405P

55,000 Rls

BLOXconnect®

Busbar Terminals & Accessories



FKG4

300V
Current: 41A
Flexible Wire: 0.5~4mm²
Rigid Wire: 0.5~6mm²
Torque: 1.5~1.8N.m
23.7x7mm

55,000 Rls



FKG16

300V
Current: 76A
Flexible Wire: 1.5~16mm²
Rigid Wire: 1.5~16mm²
Torque: 2.5~3N.m
23.7x9.8mm

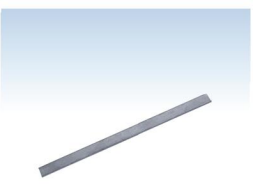
74,000 Rls



FKG35

300V
Current: 125A
Flexible Wire: 2.5~35mm²
Rigid Wire: 2.5~35mm²
Torque: 3.2~3.7N.m
23.7x14.3mm

102,000 Rls



Busbar

Size: 1000x10x3mm

2,079,000



AB/01

Support

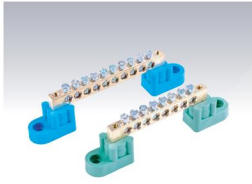
55,000 Rls



AB/02

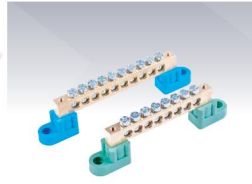
Double Support

64,000 Rls



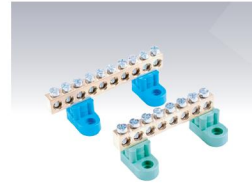
FKG2-S

FKG2-06S	97.000 Rls
FKG2-08S	115.000 Rls
FKG2-10S	137.000 Rls
FKG2-12S	155.000 Rls
FKG2-14S	175.000 Rls
FKG2-18S	214.000 Rls



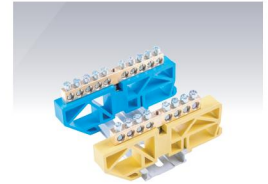
FKG2-L

FKG2-06L	175.000 Rls
FKG2-08L	213.000 Rls
FKG2-10L	250.000 Rls
FKG2-12L	287.000 Rls
FKG2-14L	325.000 Rls
FKG2-18L	398.000 Rls



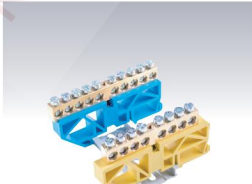
FKGG2-L

FKGG2-08L	213.000 Rls
FKGG2-10L	250.000 Rls
FKGG2-12L	287.000 Rls
FKGG2-14L	325.000 Rls
FKGG2-16L	382.000 Rls



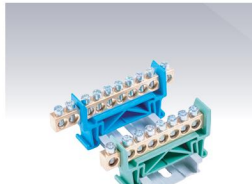
FKGS-H

FKG06S-H	109.000 Rls
FKG08S-H	112.000 Rls
FKG10S-H	132.000 Rls
FKG12S-H	150.000 Rls
FKG14S-H	169.000 Rls
FKG16S-H	188.000 Rls



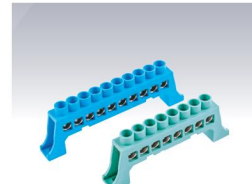
FKGL-H

FKG06L-H	174.000 Rls
FKG08L-H	199.000 Rls
FKG10L-H	238.000 Rls
FKG12L-H	278.000 Rls
FKG14L-H	319.000 Rls
FKG16L-H	359.000 Rls



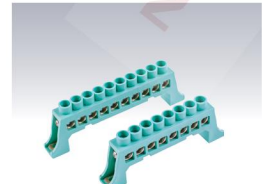
FKGS-J

FKG07S-J	113.000 Rls
FKG08S-J	120.000 Rls
FKG10S-J	132.000 Rls
FKG12S-J	154.000 Rls
FKG13S-J	159.000 Rls
FKG15S-J	169.000 Rls



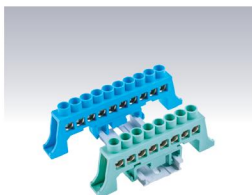
FKGL-A

FKG04L-A	97.000 Rls
FKG06L-A	137.000 Rls
FKG08L-A	174.000 Rls
FKG10L-A	214.000 Rls
FKG12L-A	252.000 Rls



FKGL-A/D

FKG04L-A/D	103.000 Rls
FKG06L-A/D	142.000 Rls
FKG08L-A/D	183.000 Rls
FKG10L-A/D	224.000 Rls
FKG12L-A/D	265.000 Rls



FKGL-C

FKG04L-C	97.000 Rls
FKG06L-C	137.000 Rls
FKG08L-C	174.000 Rls
FKG10L-C	214.000 Rls
FKG12L-C	252.000 Rls